

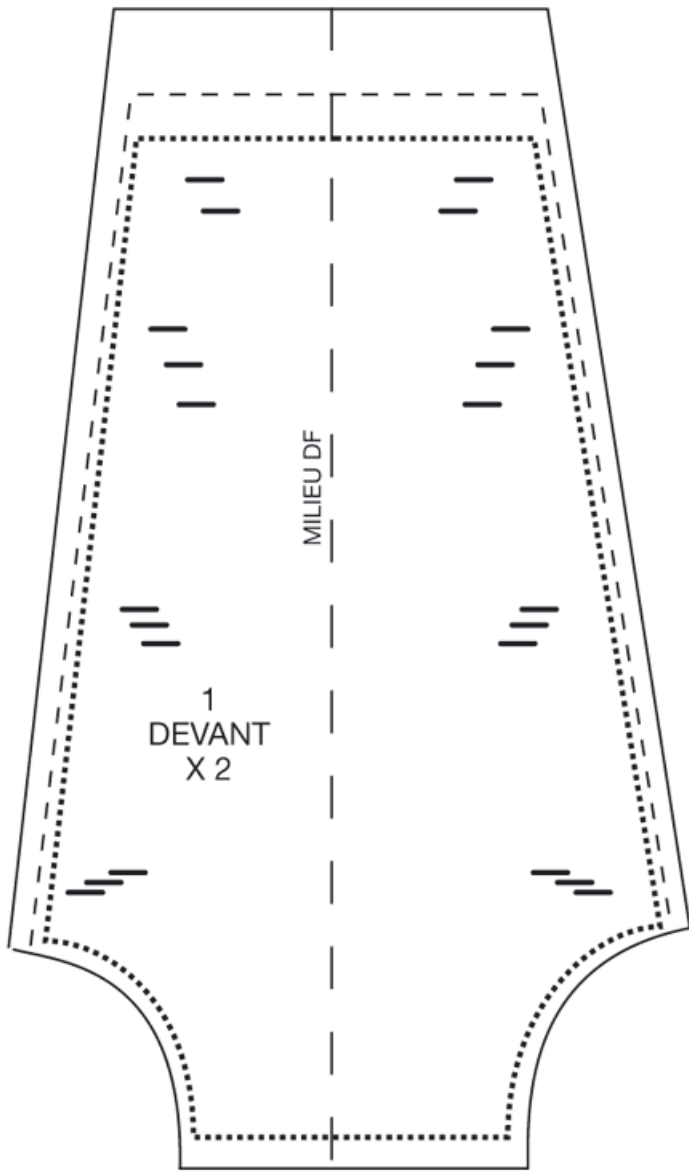
DF

4
CEINTURE X 1

pliure

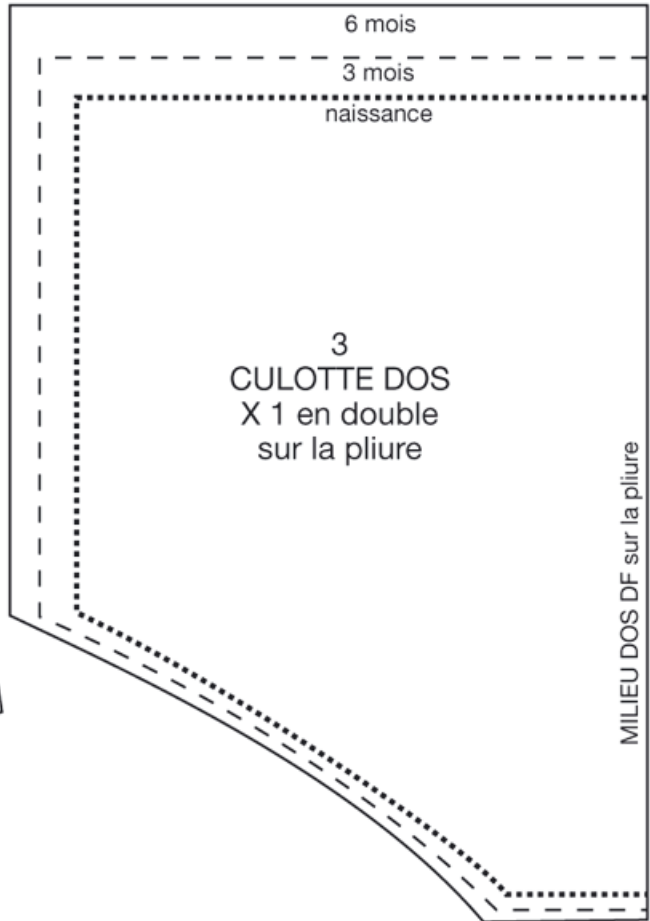
5
BRETELLE X 2

pliure



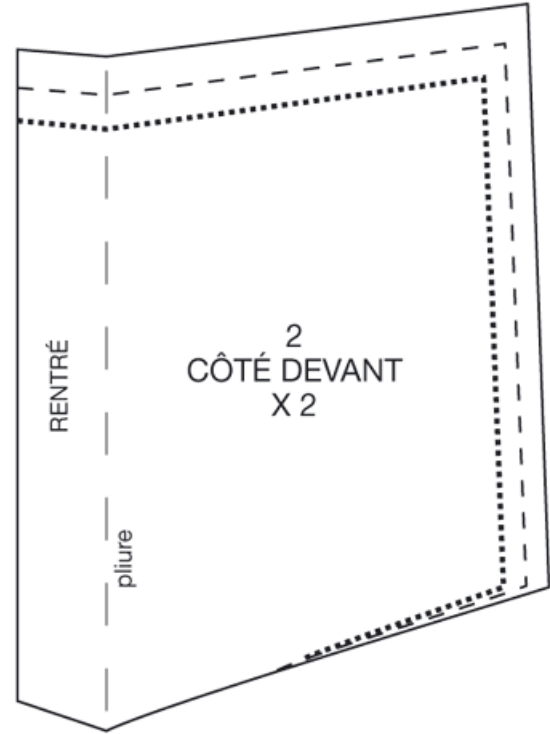
1
DEVANT
X 2

MILIEU DF



3
CULOTTE DOS
X 1 en double
sur la pliure

MILIEU DOS DF sur la pliure



2
CÔTÉ DEVANT
X 2

RENTRÉ

pliure

AGRANDIR A 275 %